

A Photographic Guide to the Arachnids of Drake Bay, Costa Rica



Gianfranco Gómez and Tracie Stice

A Photographic Guide to the Arachnids of Drake Bay, version 17

Identifications by Carlos Víquez, Stuart Longhorn and Darko Cotoras

Last updated March 12, 2022

Citation: Gómez, G. and Stice T. (2018) A Photographic Guide to the Arachnids of Drake Bay, Costa Rica.
Version 8. [pdf file] Retrieved from www.thenighttour.com/arachnids.pdf

Araneae

Anyphaenidae

Patrera sp.

Araneidae

Acacesia tenella

Alpaida bicornuta

Alpaida championi

Alpaida truncata

Argiope argentata

Argiope sp.

Argiope submaronica

Bertrana rufostrata

Cyclosa sp.

Eriophora fuliginea

Eriophora nephiloides

Eriophora ravilla

Eustala aff. fuscovittata

Eustala sp.

Gasteracantha cancriformis

Kapogea sellata

Mastophora alvareztoroi

Micrathena brevipes

Micrathena cf. duodecimspinosa

Micrathena furcula

Micrathena horrida

Micrathena cf. mitrata

Micrathena sexspinosa

Micrathena sp.

Micrathena zilchi

Scoloderus cordatus

Verrucosa arenata

Witica crassicaudus

Corinnidae

Myrmecotypus sp.

Ctenidae

Ancylometes bogotensis

Kiekie sp.

Phoneutria depilata

Ctenizidae

Ummidia sp.

Deinopidae

Deinopis longipes

Hersiliidae

Neotama mexicana

Neotama sp.

Lycosidae

Pardosa sp.

Mimetidae

Gelanor cf. zonatus

Mimetus sp.

Nephilidae

Nephila clavipes

Oxyopidae

Hamataliwa sp.

Pisauridae

Thaumasia argenteonotata

Pholcidae

Metagonia osa

Salticidae

Beata sp.

Colonus sylvanus

Corythalia sp.

Hypaeus sp.

Itata sp.

Lyssomanes sp.

Messua sp.

Myrmarachne sp.

Phiale mimica

Scytodidae

Scytodes sp.

Selenopidae

Selenops sp.

Senoculidae

Senoculus sp.

Senoculus zeteki

Sparassidae

Prusia aff. semotus

Synotaxidae

Synotaxus sp.

Tetragnathidae

Leucauge sp.

Theraphosidae

Lasiadora sp.

Neischnocolus cf. panamanus

Psalmopoeus reduncus

Theridiidae

Ariamnes sp.

Chrysso sp.

Cryptachaea sp.

Episinus sp.

Rhomphaea sp.

Theridiosomatidae

Epeirotypus sp.

Thomisidae

Epicadus granulatus

Epicadus heterogaster

Epicadus taczanowskii

Epicadus tigrinus

Mecaphesa sp.

Strophius hirsutus

Trechaleidae

Cupiennius coccineus

Enna sp.

Trechalea extensa

Trechalea sp.

Uloboridae

Miagrammopes sp.

Uloborus sp.

Acari: Order Trombidiformes

Trombididae

Amblypygi

Phrynidae

Paraphrynus laevifrons

Opiliones

Cosmetidae

Cynorta sp.

Eucynortella sp.

Paecilaema chiriquiensis

Gonyleptidae

Hernandria sp.

Sclerosomatidae

Prionostemma sp.

Zalmoxidae

Pseudoscorpiones

Chernetidae

Semeiochernes sp.

Schizomida

Hubbardiidae

Scorpiones

Buthidae

Ananteris platnicki

Centruroides bicolor

Tityus ocelote

Tityus sp.

Solifugae

Ammotrechidae

Ammotrechella sp.

Araneae

Anyphaenidae



1
Patrera sp.

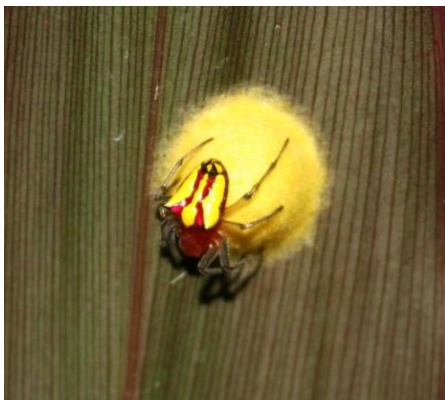


2
Patrera sp. feeding

Araneidae



1
Acacesia tenella



2
Alpaida bicornuta with egg sac



3
Alpaida championi



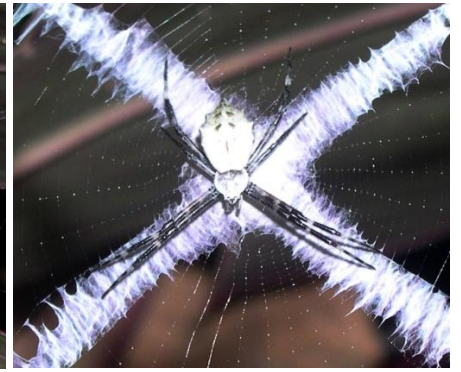
4
Alpaida truncata



5
Argiope argentata



6
Argiope sp.



6A
Argiope sp.



7
Argiope submaronica



7A
Juvenile *Argiope submaronica*



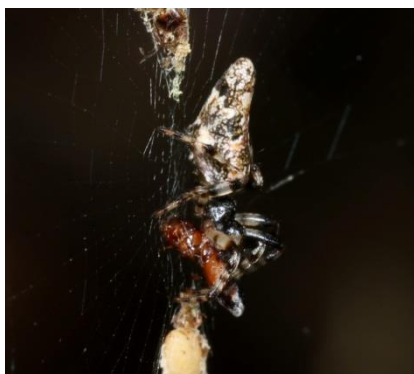
8
Bertrana rufostriata



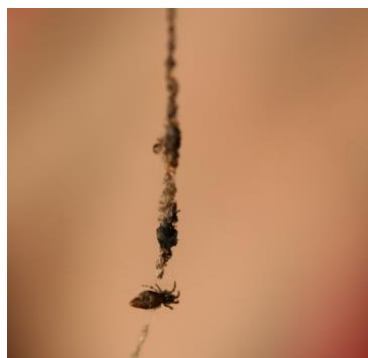
8A
Bertrana rufostriata



8B
Bertrana rufostriata



9
Cyclosa sp. feeding



9A
Cyclosa sp.



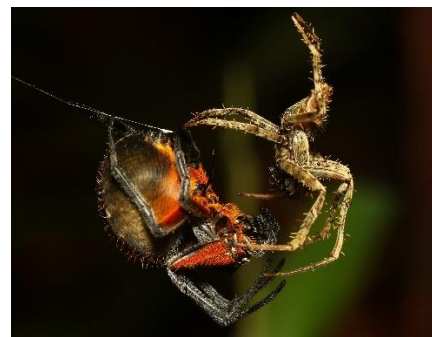
9B
Cyclosa sp. with parasitic
wasp larva attached



10
Eriophora fuliginea



10A
Eriophora fuliginea feeding on
Bioluminescent Click Beetle, *Pyrophora*
sp.



10B
Eriophora fuliginea female (below)
and male (above right)



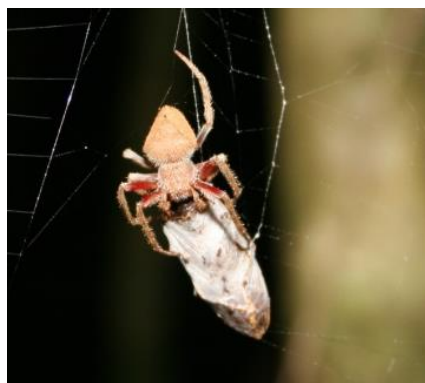
11
Eriophora nephiloides



11A
Eriophora nephiloides



11B
Eriophora nephiloides



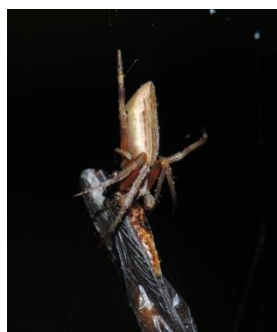
12
Eriophora ravilla



12A
Eriophora ravilla



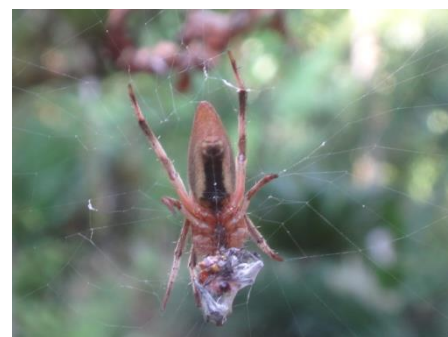
12B
Eriophora ravilla



13 - *Eustala aff. fuscovittata*



13A
Eustala aff. fuscovittata



13B
Eustala aff. fuscovittata



14
Eustala sp.



14A
Eustala sp.



14B
Eustala sp. with web



15
Eustala sp.



15A
Eustala sp.



15B
Eustala sp.



16
Gasteracantha cancriformis



16A
Gasteracantha cancriformis



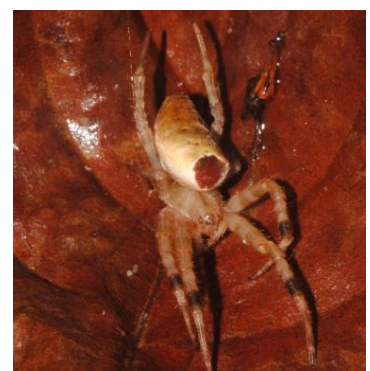
16B
Gasteracantha cancriformis



17
Kapogea sellata



17A
Kapogea sellata



17B
Kapogea sellata

****Mastophora alvareztoroi* is a new record for Central America***



18
Mastophora alvareztoroi hunting with bola



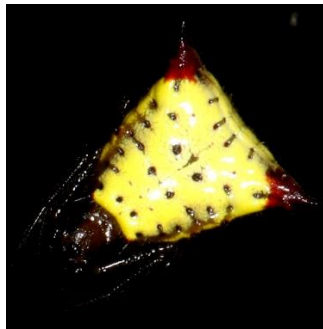
18A
Mastophora alvareztoroi



18B
Mastophora alvareztoroi hunting with bola



19
Micrathena brevipes



20
Micrathena cf. duodecimspinosa



20A
Micrathena cf. duodecimspinosa



21
Micrathena furcula (yellow morph)
female spinning egg sac



21A
Micrathena furcula (orange morph)
female spinning egg sac



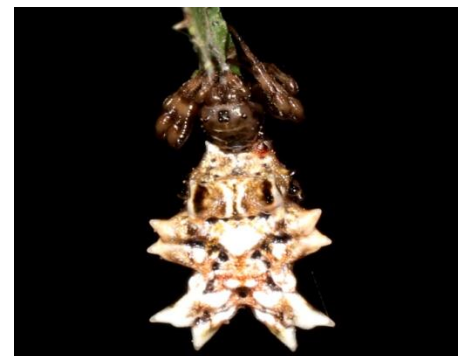
21B
Micrathena furcula (orange morph)
female spinning egg sac



22
Micrathena horrida female



22A
Micrathena horrida male



22B
Micrathena horrida female



22C
Micrathena horrida female



22D
Micrathena horrida female



22E
Micrathena horrida female



23
Micrathena cf. mitrata female
spinning egg sac



23A
Micrathena cf. mitrata



23B
Micrathena cf. mitrata



24
Micrathena aff. sexspinosa



24A
Micrathena aff. sexspinosa



24B
Micrathena aff. sexspinosa juvenile



25
Micrathena zilchi



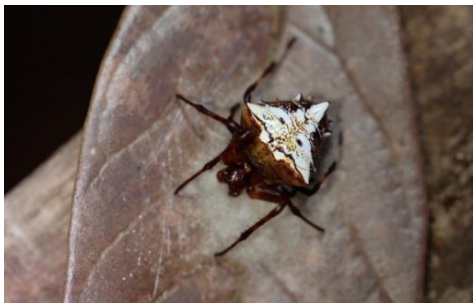
26
Scoloderus cordatus



26A
Scoloderus cordatus



26B
Scoloderus cordatus



27
Verrucosa arenata



27A
Verrucosa arenata female with egg sac



27B
Verrucosa arenata with egg sac



28
Witica crassicaudus



28A
Witica crassicaudus



28B
Witica crassicaudus

Corinnidae



1



2



3

Family Corinnidae



4
Myrmecotypus sp.

Family Corinnidae



4A
Myrmecotypus sp. mating pair

Family Corinnidae



4B
Myrmecotypus sp. female spinning
egg sac

Ctenidae



1
Family Ctenidae



1A
Family Ctenidae



1B
Family Ctenidae



2
Ancylometes bogotensis male



2A
Ancylometes bogotensis female



2B
Ancylometes bogotensis female



3
Kiekie sp.



3A
Kiekie sp.



4
Kiekie sp. feeding on Scorpion,
Tityus sp.



4A
Kiekie sp. feeding on Pygmy Rain Frog,
Pristimantis ridens



4B
Kiekie sp.



4C
Kiekie sp. feeding on *Kiekie sp.*



5
Phoneutria depilata male
Formerly *P. boliviensis*



5A
Phoneutria depilata male



5B
Phoneutria depilata female



5C
Phoneutria depilata female



D
Phoneutria depilata feeding on Giant
Marine Toad (*Rhinella horribilis*)



5E
Phoneutria depilata female

Ctenizidae



1
Ummidia sp. female



1A
Ummidia sp. female



1B
Ummidia sp. female at door opening



1C
Ummidia sp. male



1D
Ummidia sp. male



1E
Ummidia sp. male

Deinopidae



1
Deinopis longipes subadult male feeding



1A
Deinopis longipes female with eggs



1B
Deinopis longipes

Hersilida



1

Neotama mexicana



2

Neotama sp.

Lycosidae



1

Pardosa sp. female with offspring on her back



1A

Pardosa sp. frontal view



1B

Pardosa sp. with offspring

Mimetidae



1

Gelanor cf. zonatus



1A

Gelanor cf. zonatus



1B

Gelanor cf. zonatus



2
Mimetus sp.



2A
Mimetus sp. at its retreat



2B
Mimetus sp.

Nephilidae



1
Nephila clavipes female



1A
Nephila clavipes female



1B
Nephila clavipes female with kleptoparasitic flies possibly in the Chloropidae family

Oxyopidae



1
Hamataliwa sp.



1A
Hamataliwa sp.



1B *Hamataliwa* sp.

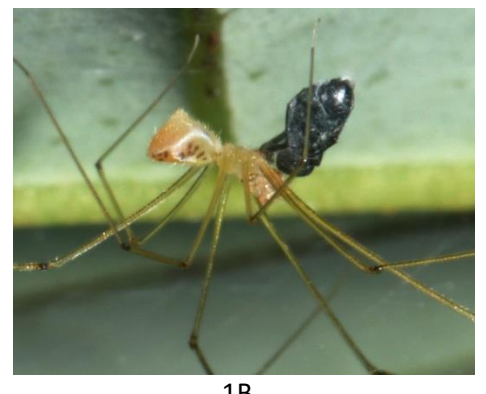
Pholcidae



1
Metagonia osa female



1A
Metagonia osa female



1B
Metagonia osa male feeding



1C
Metagonia osa mating



1D
Metagonia osa male and female

Pisauridae



1
Thaumasia argenteonotata



1A
Thaumasia argenteonotata



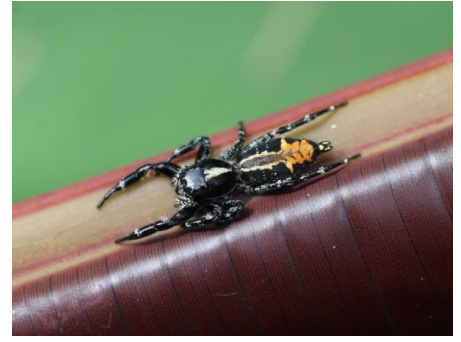
1B
Thaumasia argenteonotata



1
Family Salticidae



1A
Family Salticidae (frontal view of 1)



2
Family Salticidae



3
Family Salticidae feeding on a fly



3A
Family Salticidae feeding on a fly



4
Family Salticidae



5
Beata sp.



5A
Beata sp.



5B
Beata sp.



6
Colonus sylvanus male



7
Corythalia voluta



7A
Corythalia voluta



8
Corythalia sp.



9
Corythalia sp.



9A
Corythalia sp.



10
Hypaeus sp.



10A
Hypaeus sp.



10B
Hypaeus sp. feedin on an insect



11
Itata sp.



11A
Itata sp.



11B
Itata sp.



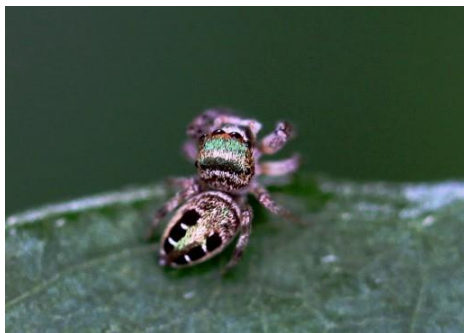
12
Lyssomanes sp.



13
Lyssomanes sp.



13A
Lyssomanes sp. with eggs



14
Messua sp.



14A
Messua sp. feeding



15
Messua sp.



16
Myrmarachne sp.



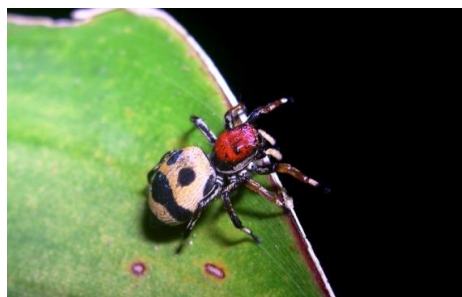
16A
Myrmarachne sp.



16B
Myrmarachne sp.



17
Phiale mimica



17A
Phiale mimica



17B
Phiale mimica



17C
Phiale mimica



17D
Phiale mimica



17E
Phiale mimica

Phiale mimica is a new record for Costa Rica. It is a polymorphic species as per Galiano, 1981 (Revision del genero *Phiale* C. L. Koch, 1846 (Araneae, Salticidae) III. Las especies polimorficas del grupo *mimica*. *Journal of Arachnology* 9: 61-85). Coloration is highly variable.

Scytodidae



1
Scytodes sp.



1A
Scytodes sp.



1B
Scytodes sp. feeding



1C
Scytodes sp. feeding



1D
Scytodes sp. female with egg sac

Selenopidae



1
Selenops sp.

Senoculidae



1 *Senoculus sp.*



1A *Senoculus sp.*



1B *Senoculus sp.*



2 *Senoculus zeteki*



2A *Senoculus zeteki* female with egg sac

Sparassidae



1A Family Sparassidae



1A Family Sparassidae



1B Family Sparassidae



2 Family Sparassidae



2A Family Sparassidae



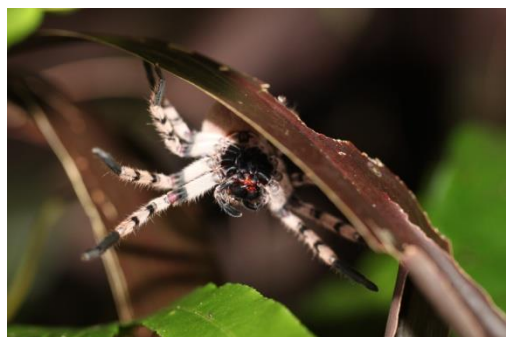
3 Family Sparassidae Female spider with spiderlings



3 Family Sparassidae



3A Family Sparassidae



4 Family Sparassidae



4A Family Sparassidae



4B Family Sparassidae (upper view)



5 Family Sparassidae



5A Family Sparassidae



5B Family Sparassidae



6 *Prusia* aff. *semotus*



6A *Prusia* aff. *semotus*



6B *Prusia* aff. *semotus*

*** *Prusia* aff. *semotus* is a new record for Costa Rica***

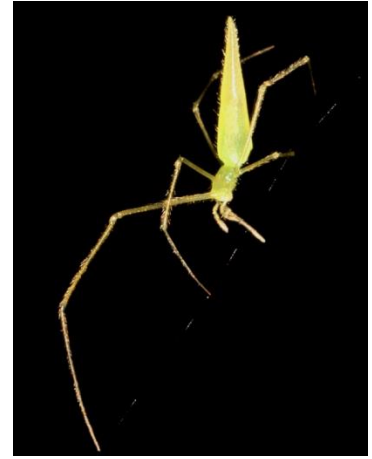
Synotaxidae



1
Synotaxus sp. male



1A
Synotaxus sp. male



1B
Synotaxus sp. female

Tetragnathidae



1
Family Tetragnathidae



1A
Family Tetragnathidae



2
Family Tetragnathidae



2A
Family Tetragnathidae



2B
Family Tetragnathidae with eggs



3
Leucauge sp.



4
Leucauge sp.



5
Leucauge sp.



1
Lasiodora sp. female



1A
Lasiodora sp. female



1B
Lasiodora sp. male



2
Neischnocolus cf. *panamanus* female



2A
Neischnocolus cf. *panamanus* female



2B
Neischnocolus cf. *panamanus* female



2C
Neischnocolus cf. *panamanus* male



2D
Neischnocolus cf. *panamanus* male



2E
Neischnocolus cf. *panamanus* male



2F
Neischnocolus cf. *panamanus* view of
iridescent tarsus



3

Psalmopoeus reduncus female



3A

Psalmopoeus reduncus male

Theridiidae



1

Family Theridiidae



2

Ariamnes sp.



2A

Ariamnes sp. female with egg sac



2B

Ariamnes sp.



3

Chrysso sp. Male



3A

Chrysso sp. Female



3B

Chrysso sp. with hatchlings



4
Cryptachaea sp.



4A
Cryptachaea sp.



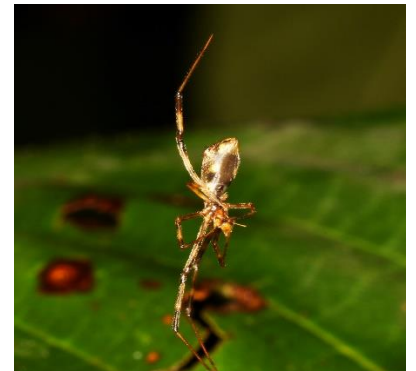
4B
Cryptachaea sp.



5
Episinus sp.



5A
Episinus sp.



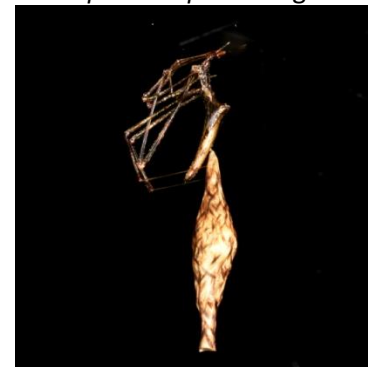
5B
Episinus sp. feeding



5
Rhomphaea sp. female



5A
Rhomphaea sp. female



5B
Rhomphaea sp. with egg sac



5C
Rhomphaea sp. male



5D
Rhomphaea sp. male

Theridiosomatidae



1

Family Theridiosomatidae



2

Family Theridiosomatidae



3

Family Theridiosomatidae



4

Epeirotypus sp.



4A

Epeirotypus sp.



4B

Epeirotypus sp.

Thomisidae



1

Family Thomisidae



1A

Family Thomisidae



2

Family Thomisidae



2A

Family Thomisidae



2B

Family Thomisidae



3
Epicadus granulatus



3A
Epicadus granulatus



3B
Epicadus granulatus



4
Epicadus heterogaster



4A
Epicadus heterogaster



4B
Epicadus heterogaster



5
Epicadus taczanowskii



5A
Epicadus taczanowskii



5B
Epicadus taczanowskii male



5C
Epicadus taczanowskii



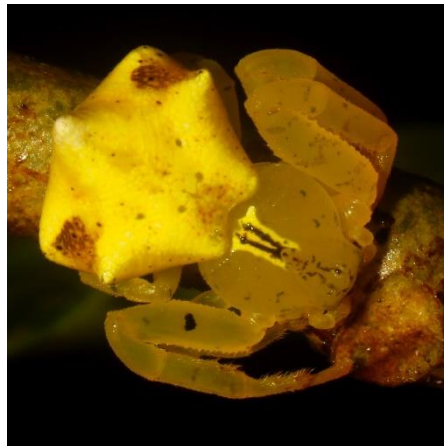
5D
Epicadus taczanowskii female
spinning egg sac



5E
Epicadus taczanowskii feeding on a
cricket



6
Epicadus tigrinus



6A
Epicadus tigrinus



6B
Epicadus tigrinus



7
Mecaphesa sp.



7A
Mecaphesa sp.



8
Strophius hirsutus carrying ant corpse



8A
Strophius hirsutus with ant corpse



8B
Strophius hirsutus carrying ant corpse



1

Cupiennius coccineus female



1A

Cupiennius coccineus female



1B

Cupiennius coccineus feeding on
Pygmy Rain Frog (*Pristimantis ridens*)



1C

Cupiennius coccineus female with egg
sac



1D

Cupiennius coccineus feeding on a
wasp



1E

Female *Cupiennius coccineus* feeding
on male *Cupiennius coccineus*



1 *Enna* sp. with egg sac



1A *Enna* sp.



1B *Enna* sp.



3
Trechalea extensa



3A
Trechalea extensa



4
Trechalea sp.

Uloboridae



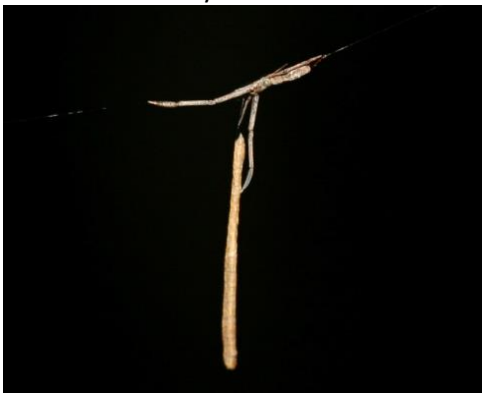
1
Family Uloboridae



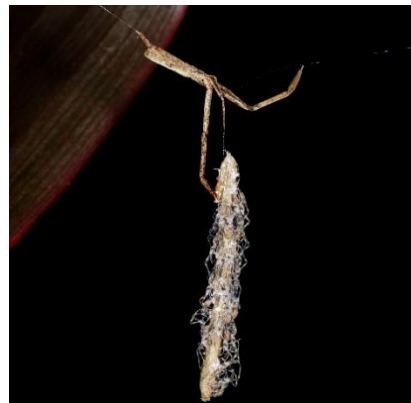
1A
Family Uloboridae



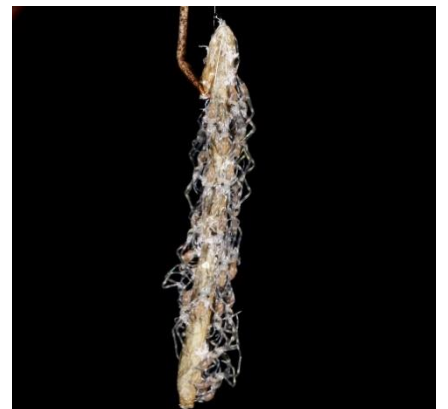
1B
Family Uloboridae



2
Miagrammopes sp. female with egg sac



2A
Miagrammopes sp. female with offspring



2B
Close up of hatchlings



3
Uloborus sp.



3A
Uloborus sp. with egg sac



3B
Uloborus sp. with offspring

Acari – Order Trombidiformes

Trombidiidae



1
Family Trombidiidae



1A
Family Trombidiidae

Amblypygi

Phrynidae



1
Paraphrynus laevis



1A
Paraphrynus laevis molting



1B
Paraphrynus laevis



1C

Paraphrynus laevifrons feeding on
Osa Anole, *Anolis osa*



1D

Paraphrynus laevifrons feeding on
Stejneger's Litter Frog, *Craugastor*
stejnegerianus



1E

Paraphrynus laevifrons female with
offspring

Opiliones

Cosmetidae



1

Family Cosmetidae



1A

Family Cosmetidae



1B

Family Cosmetidae



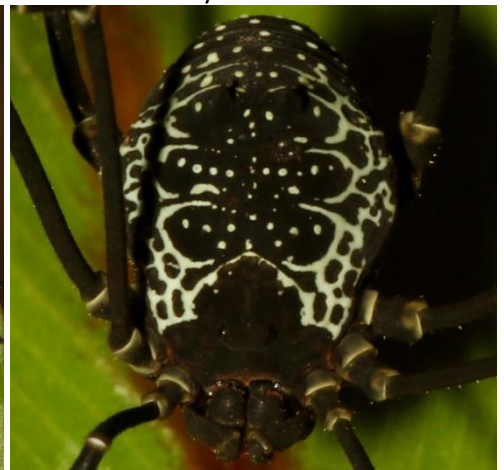
2

Cynorta sp.



2A

Cynorta sp.



2B

Cynorta sp.



3
Eucynortella sp. male



3A
Eucynortella sp. female



3B
Eucynortella sp. male and female
mating near egg mass



4
Paecilaema chiriquiensis



4A
Paecilaema chiriquiensis

Gonyleptidae



1
Hernandria sp.



2
Hernandria sp.



3
Hernandria sp.

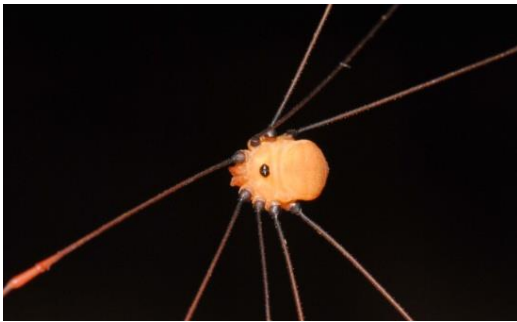
Sclerosomatidae



1
Prionostemma sp.



2
Prionostemma sp.



2A
Prionostemma sp.



2B
Prionostemma sp. feeding on a
Geometrid Moth caterpillar



2C
Prionostemma sp. feeding on a fly



3 *Prionostemma sp.*



3A *Prionostemma sp.*



3B *Prionostemma sp.*

Zalmoxidae



1 Family Zalmoxidae

Pseudoscorpiones

Chernetidae



1

Pseudoscorpion latched on the foot of
a Snout Beetle



1A

Pseudoscorpion latched on the foot of
Snout Beetle



2

Pseudoscorpion



2A

Pseudoscorpion



3

Semeiochernes sp.
Was found on a Giant Tropical Fly,
Pantophthalmus tabaninus



3A

Semeiochernes sp.
Was found on a Giant Tropical Fly,
Pantophthalmus tabaninus



3B

Semeiochernes sp.
Was found on a Giant Tropical Fly,
Pantophthalmus tabaninus

Schizomida

Hubbardiidae



1
Family Hubbardiidae

Scorpiones

Buthidae



1
Ananteris platnicki



1A
Ananteris platnicki female with
offspring



1B
Ananteris platnicki female with
offspring



2
Centruroides bicolor



2A
Centruroides bicolor with offspring



2B
Centruroides bicolor feeding



3
Tityus ocelote



3A
Tityus ocelote feeding on *T. ocelote*



3B
Tityus ocelote female with offspring



4
Tityus sp.



4A
Tityus sp. feeding on a centipede



4B
Tityus sp. feeding on an Amblypigid



4C
Tityus sp.



4D
Tityus sp. with offspring



4E
Tityus sp. courtship

Solifugae

Ammotrechidae



1
Ammotrechella sp.



1A
Ammotrechella sp.



1B
Ammotrechella sp.

Update Log

August 4th, 2019

1. Replaced photograph 3 – *Alpaida bicornuta*
2. Replaced photograph 8 – *Cyclosa* sp.
3. Replaced photograph 10A – *Eriophora nephiloides*
4. Added photograph 10B – *Eriophora nephiloides*
5. Replaced photographs 11A and 11B – *Eriophora ravilla*
6. Replaced photograph 20B – *Micrathena horrida*
7. Added photograph 34 – *Ctenus* sp. feeding on Scorpion, *Tityus* sp.
8. Replaced photograph 38 – *Deinopis longipes* male feeding
9. Replaced photograph 38A – *Deinopis longipes* female with egg sac
10. Added photographs 45A and 45B – *Thaumasia argenteonotata*
11. Added photographs 47, 47A – Family Salticidae
12. Added photographs 52, 52A – *Corythalia voluta*
13. Added photographs 63C and 63D – *Scytodes* sp. feeding and *Scytodes* sp. female with egg sac
14. Added photographs 73, 73A and 73B – *Prusia* aff. *semotus*
15. Added photograph 74B – *Synotaxus* sp. female
16. Replaced photograph 83 – *Ariamnes* sp.
17. Added photograph 86B – *Rhomphaea* sp. with egg sac
18. Added photographs 91 and 91A – Family Thomisidae
19. Added photographs 97A and 97B – *Enna* sp.
20. Added photographs 102, 102A and 102B – *Uloborus* sp., *Uloborus* sp. with egg sac, *Uloborus* sp. with newly hatched spiderlings
21. Replaced photograph 110 – *Hernandria* sp.
22. Added photographs 110A and 110B – *Hernandria* sp.
23. Added photograph 112 – *Prionostemma* sp.

November 10th, 2019

24. Added photographs 93, 93A and 93B – Family Thomisidae

December 2nd, 2019

25. Added photographs 84, 84A, 84B – *Chrysso* sp.

January 10th, 2020

26. Added photographs 96, 96A and 96B – *Strophius hirsutus* carrying ant corpse

June 10th, 2020

27. Correction on ID of photograph 4 – *Alpaida championi*
28. Added photograph 18A – *Micrathena* cf. *duodecimspinosa*

March 9th, 2021

29. Updated species name from *Phoneutria boliviensis* to *Phoneutria depilata*

March 17th, 2021

30. Added photograph 2 – *Acacesia* sp.
31. Added photograph 18B – *Micrathena* cf. *duodecimspinosa*
32. Added photograph 20A – *Micrathena horrida* male
33. Changed photograph 22A – *Micrathena sexspinosa*
34. Added photograph 29 – Family Corinnidae
35. Added photograph 42B – *Gelanor* cf. *zonatus*
36. Added photographs 43, 43A, 43B – *Mimetus* sp.
37. Changed photographs 50, 50A, 50B – *Beata* sp.
38. Added photograph 58A – *Lyssomanes* sp. with eggs
39. Added photographs 61, 61A, 61B – *Myrmarachne* sp.
40. Added photograph 68 - Family Sparassidae - Female spider with newly hatched spiderlings

March 18th, 2021

1. Changed photograph 31B – Family Ctenidae
2. Changed name on 33, 33A, 34, 34A, 34B, 34C – *Kiekie* sp.
3. Added photograph 41B - *Pardosa* sp. with offspring
4. Added photographs 76, 76A - Family Tetragnathidae
5. Added photographs 85, 85A, 85B – *Cryptachaea* sp.
6. Added photographs 101, 101A - *Miagrammopes* sp. female with newly hatched offspring and close up of hatchlings
7. Changed photograph 104C - *Paraphrynus laevifrons* feeding on Osa Anole, *Anolis osa*
8. Changed photograph 115, 115A - Pseudoscorpion latched on the foot of Snout Beetle
9. Changed photograph 121D – *Tityus* sp. with offspring

March 23rd, 2021

1. Changed *Acacesia* sp. to *Acacesia tenella* (#2)
2. Changed *Larinia* sp. to *Eustala* sp. (#17)
3. Changed *Micrathena* aff. *sexspinosa* to *Micrathena brevipes* (#18) and removed former #18 *Micrathena duodecimspinosa*
4. Changed *Ami* sp. to *Neischnocolus* cf. *panamanus* (#79)

March 24th, 2021

1. Added photograph Ctenidae 2B *Ancylometes bogotensis* female
2. Moved Cupiennius to Trechaleidae

March 29th, 2021

1. Replaced photograph Ctenidae 5D *Phoneutria depilata* feeding on Giant Marine toad (*Rhinella horribilis*)

2. Replaced photograph Trechaleidae 1B *Cupiennius coccineus* feeding on Pygmy Rain Frog (*Pristimantis ridens*)
3. Added Family Pholcidae with photographs 1 and 1A *Metagonia* sp.

March 30th, 2021

1. Replaced photograph Salticidae 14A *Messua* sp. feeding

March 31st, 2021

1. Added photographs Thomisidae 4, 4A, 4B *Epicadus granulatus*

April 4th, 2021

1. Added photograph Anyphaenidae 2 *Patrera* sp. feeding
2. Added photographs Pholcidae 2, 2A *Metagonia* sp. feeding
3. Added photograph Theridiidae 3 *Chrysso* sp. Male
4. Added photographs Theridiidae 5, 5A, 5B *Episinus* sp.
5. Added photograph 2B Family Tetragnathidae with eggs

April 8th, 2021

1. Added Oxyopidae 1, 1A, 1B

April 13th, 2021

1. Added Araenidae 7, 7A, 7B *Bertrana* sp.

July 18th, 2021

1. Added Thomisidae 6, 6A, 6B *Epicadus tigrinus*
2. Added Pseudoscorpiones 2, 2A
3. Replaced photographs Araneidae 24, 24A, 24B *Scoloderus cordatus*

September 9th, 2021

1. Added Pholcidae 1C, 1D
2. Added Cosmetidae 2A, 2B, 3, 3A, 3B

March 12th, 2022

1. Added Thomisidae 5b *Epicadus taczanowskii* male
2. Added Araneidae 4 *Alpaida truncate*
3. Replaced photographs Araneidae 10 and 10B *Eriophora fuliginea*



This guide was made possible by the generous support of La Paloma Lodge, hosts of the 2018 Preliminary Survey of the Arachnids of Drake Bay, Costa Rica. For their commitment to fostering a greater understanding of the wildlife of the Osa Peninsula, we give our sincerest Thanks!

We also wish to extend our heartfelt gratitude to Sue Kalmbach, Nichole Dupont, Ann Becker, Wictor and Helen Phalén, Alicia Borisonik, Debra Winegarden, and James and Judy Stice – friends and family whose contributions set this project into motion.

Finally, we would like to thank Carlos Viquez, Stuart Longhorn and Darko Cotoras for their invaluable help with identifications.

Photo credits

Darko Cotoras: [Araneidae](#): 1, 10, 12, 12A, 12B, 14, 14A, 14B, 21B [Corinnidae](#): 1 [Ctenidae](#): 2, 5, 5A [Ctenizidea](#): 1 [Pisauridae](#): 1 [Salticidae](#): 8, 10, 10A [Scytodidae](#) 1, 1A [Senoculidae](#) 2, 2A [Sparassidae](#) 4, 4A [Synotaxidae](#) 1, 1A [Tetragnathidae](#) 3 [Theraphosidae](#) 1, 1A [Theridiidae](#) 5, 5A, 5C, 5D [Theridiosomatidae](#) 1, 2, 3 [Uloboridae](#): 1 [Phryniidae](#): 1 [Cosmetidae](#): 1, 2, 2A, 4 [Sclerosomatidae](#): 1, 2 [Hubbardiidae](#): 1

Carlos Viquez: [Theraphosidae](#) 2F

All other photos by Gianfranco Gómez and Tracie Stice

